

# Candle

Regina Grewe

## Paper Piecing Pattern

Ostwaldee 21

D-59174 Kamen

www.reginagrewe.de

info@reginagrewe.de

1 inch

When printing the PDF file, please make sure that your page scaling options are set to 'none'. In the printout, the lines below should measure exactly 1 inch.

1 inch



Note: All project measurements are centimeters.  
Finished size: 15x15 cm plus seam allowances.

Use paper piecing to sew the individual sections and join according to the diagram.

If the little corners are too tiny, just leave them off. Or enlarge the pattern.

Instead of section F simply attach a 3 cm wide strip of fabric. Embroider or paint the wick and the text.

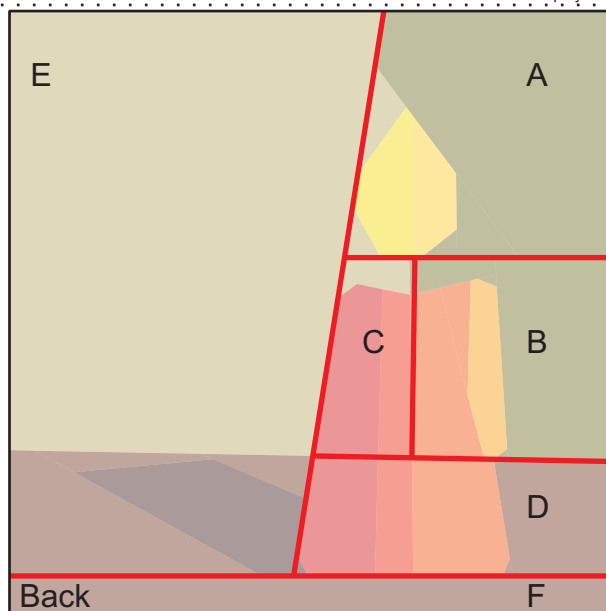
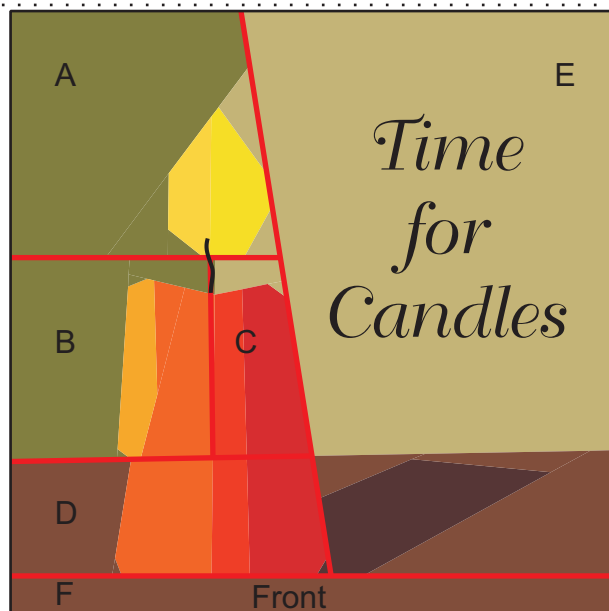
You want another text? Just tell me.

You can easily change the size of blocks to your needs by adjusting the page scaling in the printer settings of your computer or copier. Here is the formula:  
 $(\text{Desired size}) / (\text{Actual size}) \times 100 = \text{percentage for scaling}$   
Example: If you want to enlarge a block from its actual size of 6" to 8", you calculate:  $8" / 6" \times 100 = 133,33\%$ .

Check out my paper piecing tips at [www.reginagrewe.de/index\\_e.html](http://www.reginagrewe.de/index_e.html)

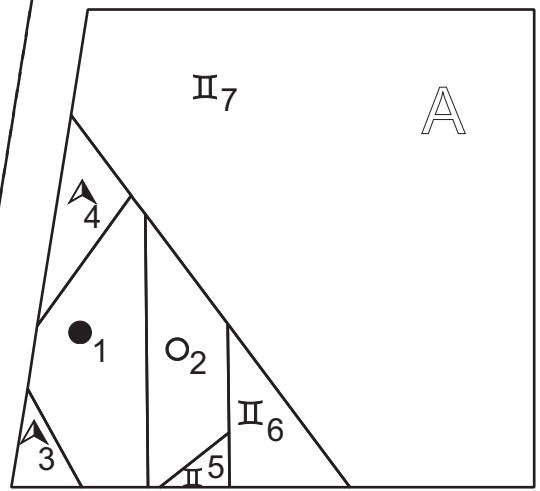
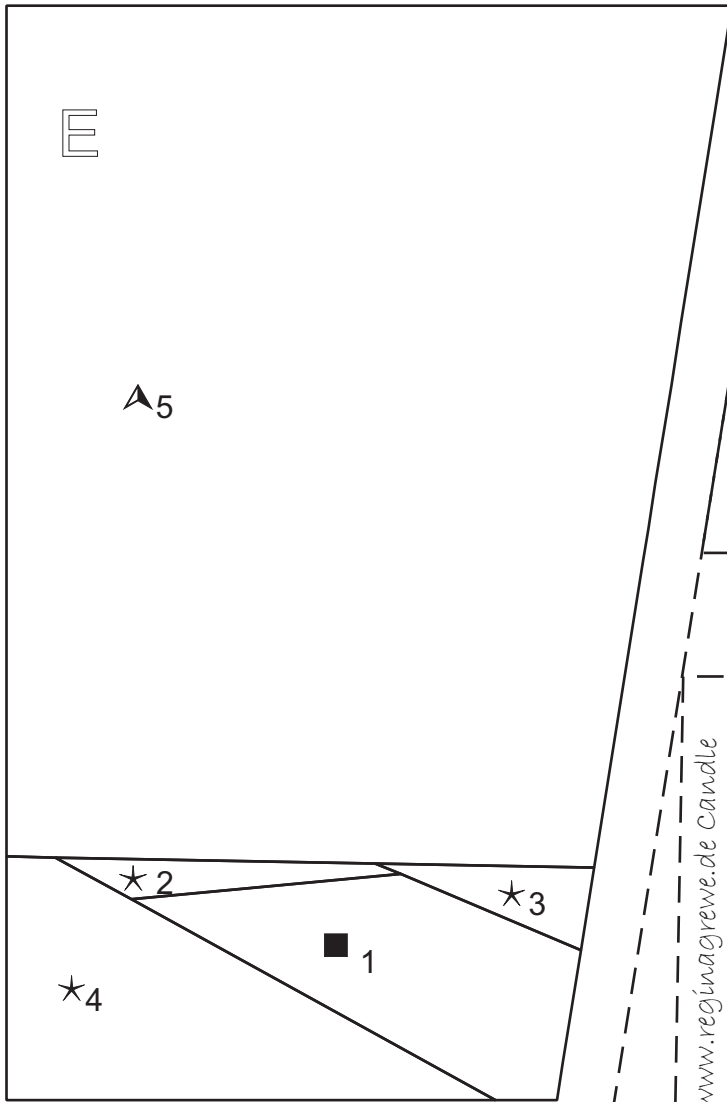
...especially „Handling Teensy-Weensy Pattern Pieces“.

Fold to make a display

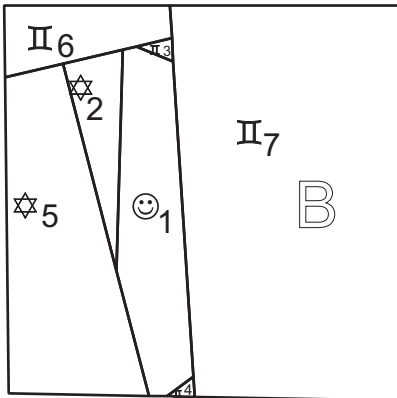
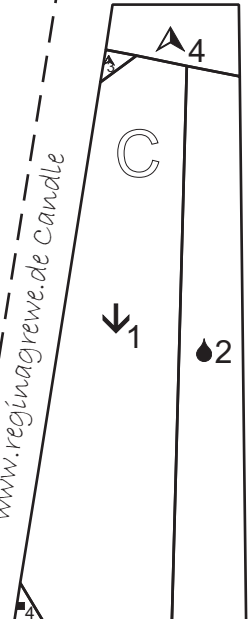
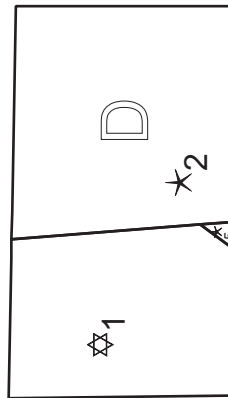


- |                         |                     |
|-------------------------|---------------------|
| ▯ Background medium     | ☆ Orange red light  |
| ▲ Background light      | ◆ Orange red medium |
| ● Yellow light          | ▼ Orange red dunkel |
| ○ Yellow medium         | ★ Base light        |
| ☺ Orange red very light | ■ Base dark         |

- B to C
- A to BC
- D to BC
- E to ACD
- F to DE



Candle



# Time for Candles

